



# 2020 VALUE BUILD HOMES FLOOR PLAN CATALOG

*Explore our catalog of over 30  
customizable new home plans*

---

# TABLE OF CONTENTS

## Our New Home Floor Plans

Alexander.....	4	Kelly .....	21
Ashton .....	5	Linda .....	22
Brunswick .....	6	Matthew .....	23
Burke .....	7	Moore .....	24
Camden .....	8	Nash .....	25
Chandler .....	9	Norman .....	26
Chatham .....	10	Pamlico .....	27
Cherokee .....	11	Patriot .....	28
Christine .....	12	Paula .....	29
Creekmore .....	13	Pitt .....	30
Donald .....	14	Robin .....	31
Duplin .....	15	Scotland .....	32
Erickson .....	16	Stanley .....	33
Graham .....	17	Vance .....	34
Greene .....	18	Washington .....	35
Hyde .....	19	Wayne .....	36
Judy .....	20	Yadkin.....	37





# ABOUT VALUE BUILD HOMES

## We're committed to offering the highest quality custom homes at the most affordable prices.

What Makes Us Different? We specialize in building custom homes in NC on your existing land.

House-built-on-your-land Value Build Homes is not your typical "cookie-cutter" homebuilder. We work hard to be different. We work with each of our clients from inception through closing. We offer a 10-year, insurance-backed structural warranty. But there's one thing beyond that which really sets us apart: We specialize in building custom homes in NC on your existing land.



Perhaps you've inherited a parcel of land and you're ready to start a new home construction. Maybe you have found the perfect plat of land and have already secured it. We can even connect you to plot specialists who can help you discover some amazing locations if you haven't started looking yet.

**Whatever your situation, we can build your dream home on your land.**

How is it possible to deliver such high quality at an affordable price? We can do it because we always insist on building our homes 100% on site, stick built on the ideal lot you specify. While other builders will fabricate part (or all) of their homes offsite, we don't subscribe to this method of home building, and, quite frankly, never will.

In order to deliver the most house for your money, real home construction must be completed on site. To that end, we have established close relationships with select suppliers and trade partners so we can get the best rates available on all building materials. This is a tremendous savings that we pass on to you. This is also why we can offer a 10 Year Warranty on the structural integrity of every home we build. We can do this with confidence because we know our work and can maintain extremely high quality standards since nothing is prefabricated offsite.

**Are other homebuilders willing to stand behind their product for a decade? We are! Value Build Homes—we're different, and proud of it.**

# OUR HOMES AT A GLANCE

<b>FLOOR PLAN</b>	<b>SQ. FT.</b>	<b>BED</b>	<b>BATH</b>	<b>LEVEL</b>
Alexander	2,350	3	2	1
Ashton	3,024	4	3	2
Brunswick	1,810	3	2	1
Burke	2,777	4	2	1
Camden	1,734	3	2	1
Chandler	1,078	3	2	1
Chatham	1,529	3	2	1
Cherokee	2,765	3	2.5	2
Christine	1,768	3	2.5	2
Creekmore	2,553	4	3	1.5
Donald	1,515	3	2	1
Duplin	1,545	3	2.5	2
Erickson	2,078	4	2.5	2
Graham	1,254	3	2	1
Greene	3,646	4	2.5	2
Hyde	3,106	4	3	2
Judy	1,075	3	2	1
Kelly	1,421	3	2	1
Linda	1,272	3	2	1
Matthew	2,016	3	2	1
Moore	2,225	3	2.5	2
Nash	1,657	4	2	1
Norman	2,117	3	2.5	2
Pamlico	2,092	3	2.5	1
Patriot	1,515	3	2	1
Paula	1,711	3	2.5	2
Pitt	1,711	4	2.5	2
Robin	1,768	3	2.5	2
Scotland	2,564	4	2.5	2
Stanley	1,943	3	2.5	2
Vance	2,048	3	2	1
Washington	1,760	3	2	1
Wayne	3,007	4	3	2
Yadkin	1,766	3	2.5	2



# THE ALEXANDER



## ALEXANDER

**HEATED**

FIRST FLOOR

TOTAL

2,350 SQ FT

2,350 SQ FT



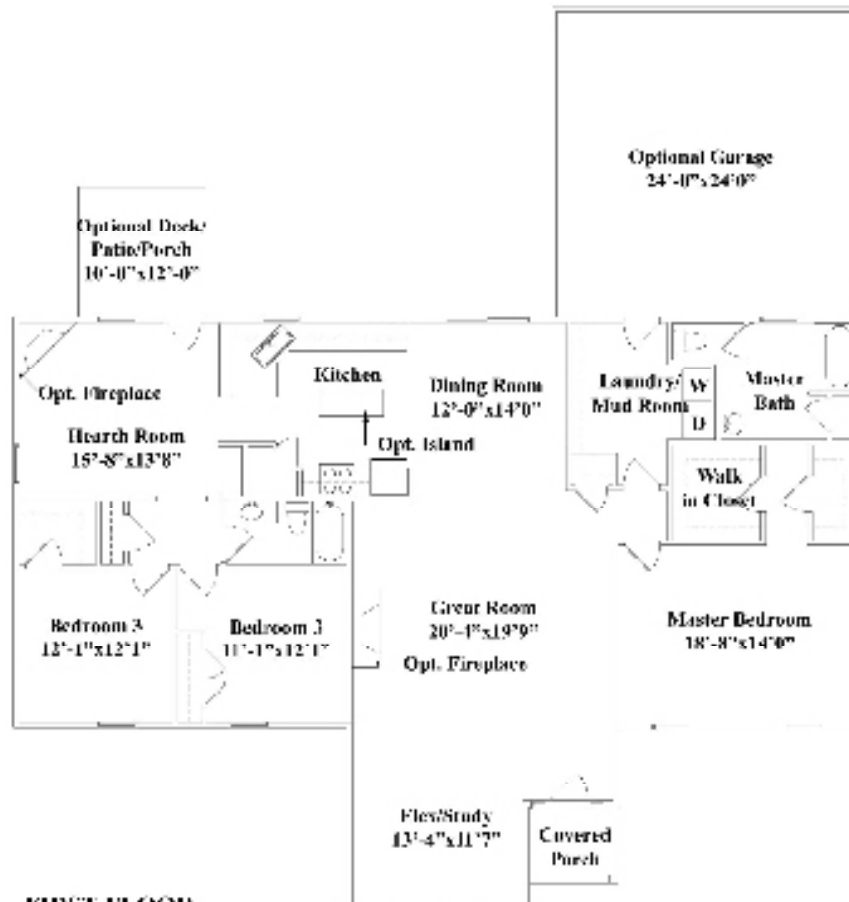
**ELEVATION-C**



**ELEVATION-B**



**ELEVATION-A**



**FIRST FLOOR**

Value Build Homes 3015 S. Jefferson Davis Highway Sanford, NC 27332  
 P. 919.777.0494 F. 919.777.0153 www.valuebuildhomes.com

# THE ASHTON

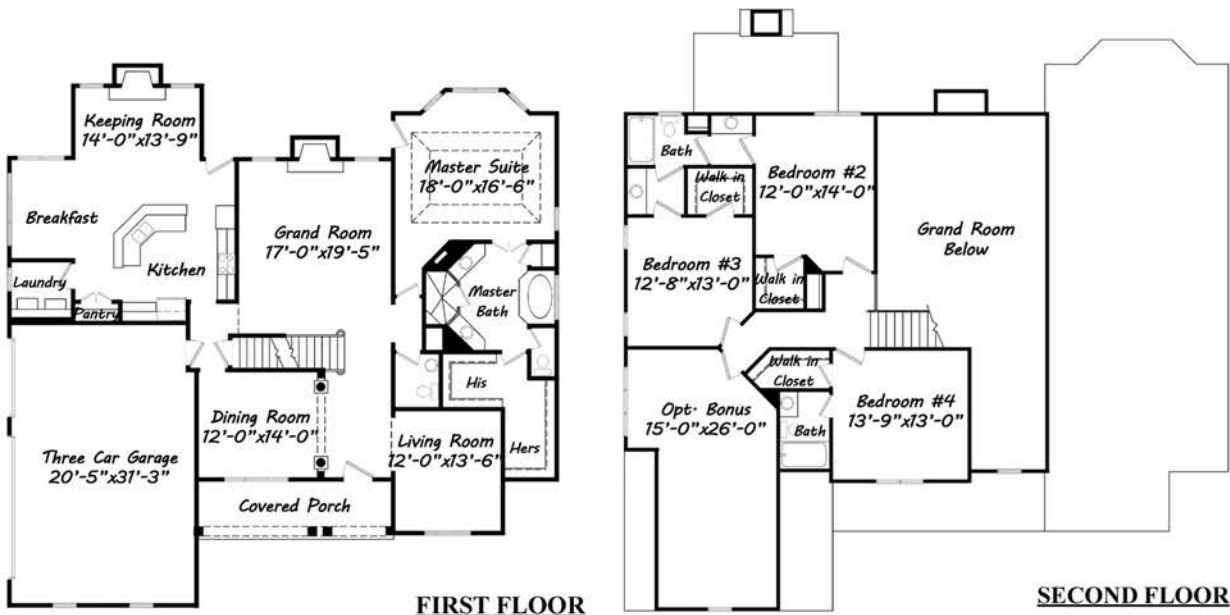


## ASHTON

*Signature Series*

**HEATED**

FIRST FLOOR	2,146 SQ FT
SECOND FLOOR	878 SQ FT
TOTAL	3,024 SQ FT



Value Build Homes 3015 S. Jefferson Davis Highway Sanford, NC 27332  
 t. 919.777.0393 f. 919.777.0133 www.valuebuildhomes.com





## BRUNSWICK

**HEATED**

FIRST FLOOR

1,810 SQ FT

TOTAL

1,810 SQ FT



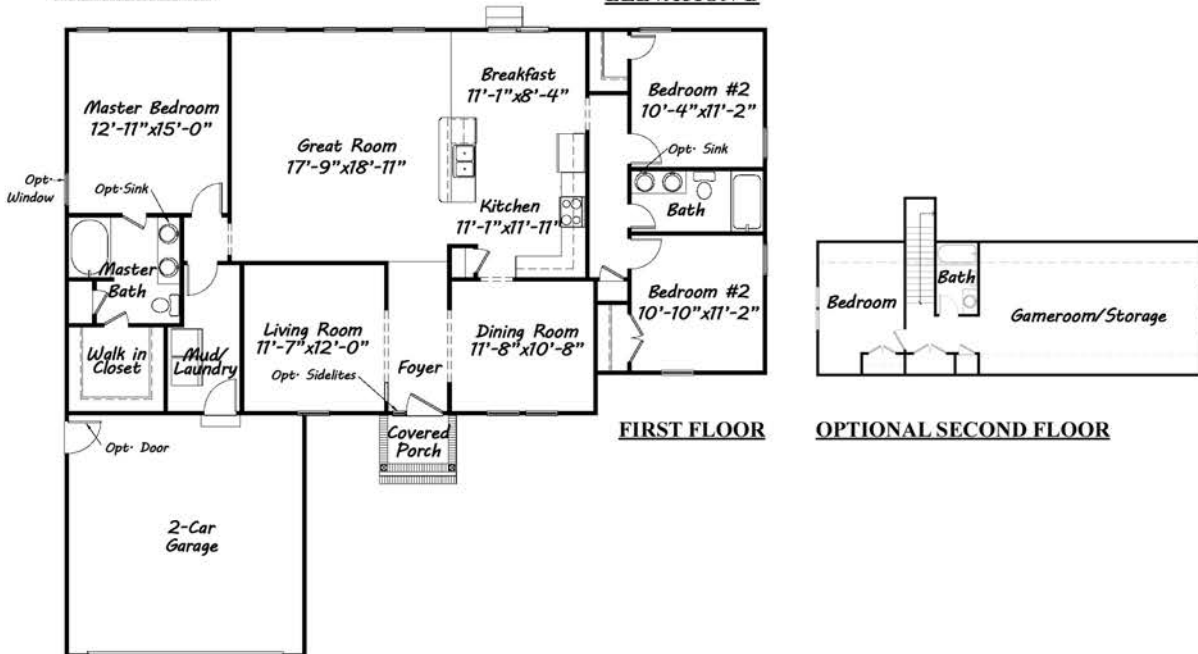
**ELEVATION-C**



**ELEVATION-A**



**ELEVATION-B**



Value Build Homes 3015 S. Jefferson Davis Highway Sanford, NC 27332  
 t. 919.777.0393 f. 919.777.0133 www.valuebuildhomes.com





## BURKE

**HEATED**

FIRST FLOOR

2,277 SQ FT

TOTAL

2,277 SQ FT



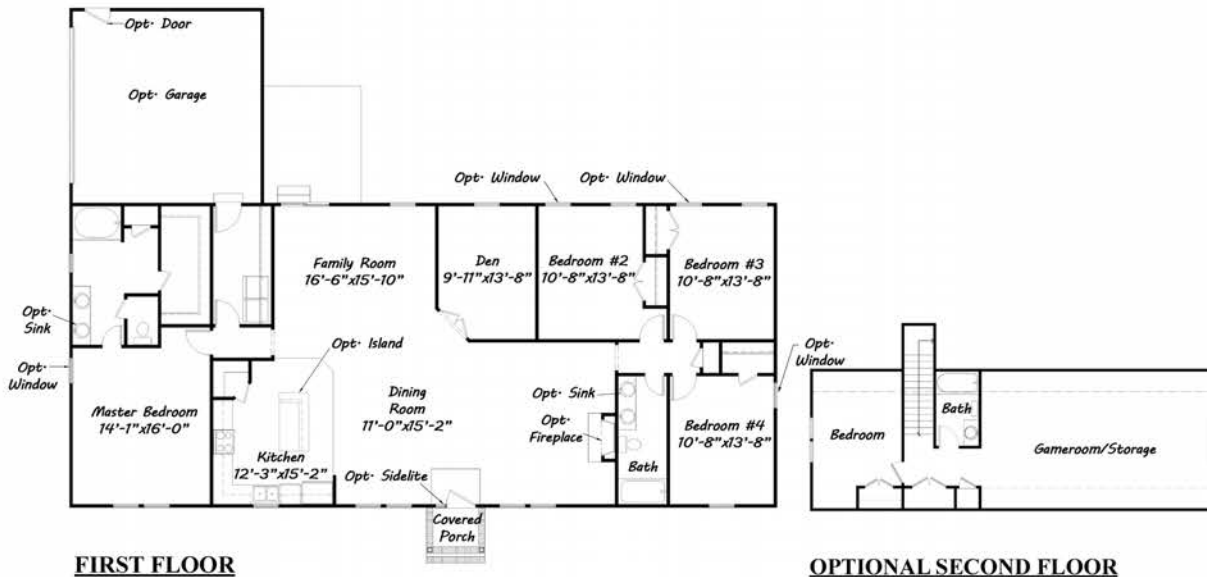
**ELEVATION-C**



**ELEVATION-A**



**ELEVATION-B**



**FIRST FLOOR**

**OPTIONAL SECOND FLOOR**

Value Build Homes 3015 S. Jefferson Davis Highway Sanford, NC 27332  
 t. 919.777.0393 f. 919.777.0133 www.valuebuildhomes.com

# THE CAMDEN



## CAMDEN

**HEATED**

FIRST FLOOR

1,734 SQ FT

TOTAL

1,734 SQ FT



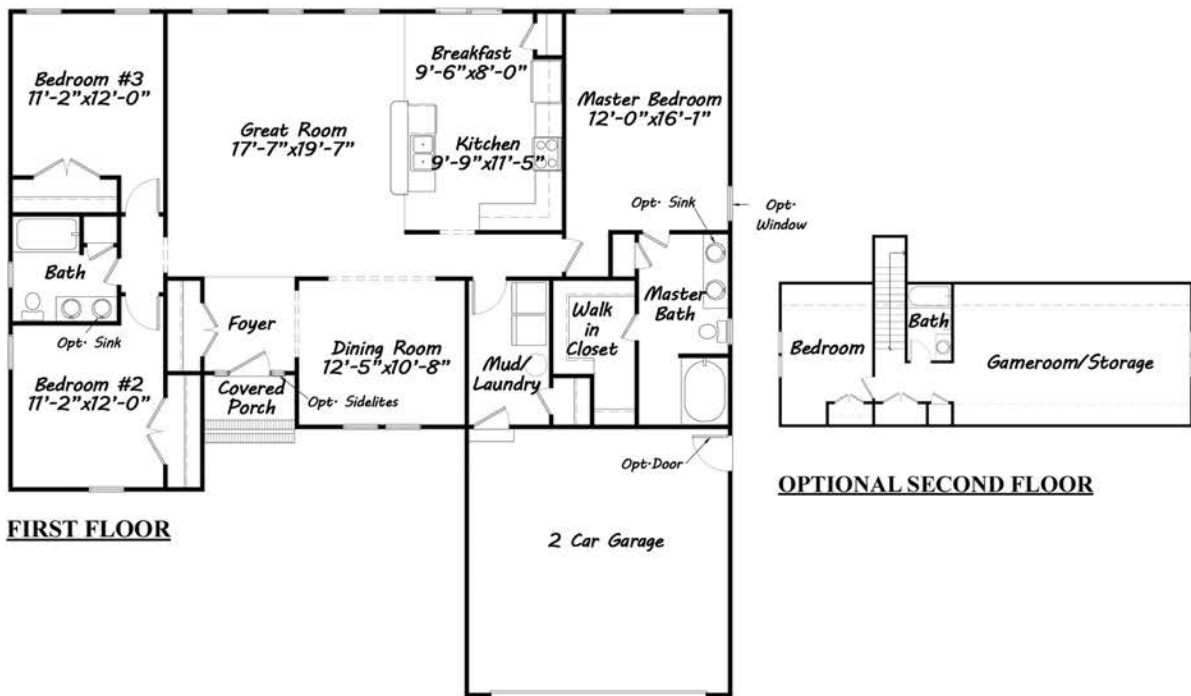
**ELEVATION-C**



**ELEVATION-A**



**ELEVATION-B**



Value Build Homes 3015 S. Jefferson Davis Highway Sanford, NC 27332  
 t. 919.777.0393 f. 919.777.0133 www.valuebuildhomes.com



# THE CHANDLER



## CHANDLER

**HEATED**

FIRST FLOOR	1,078 SQ FT
TOTAL	1,078 SQ FT



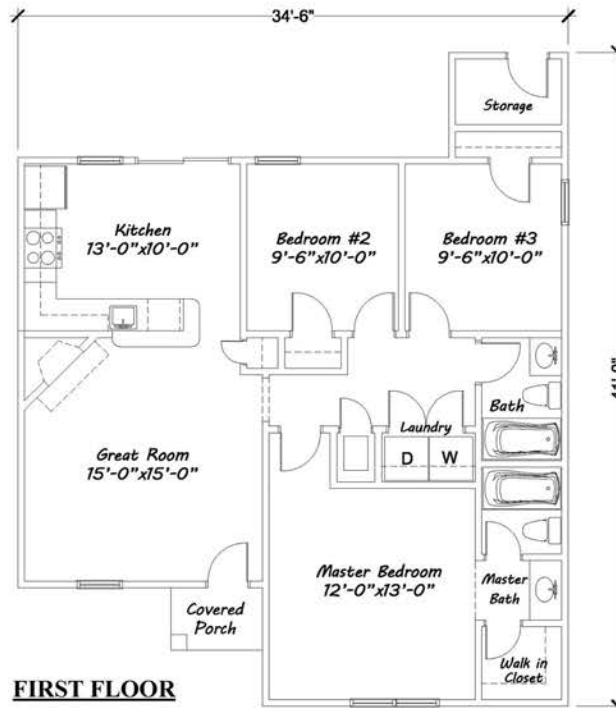
**ELEVATION-C**



**ELEVATION-B**



**ELEVATION-A**



Value Build Homes 3015 S. Jefferson Davis Highway Sanford, NC 27332  
 t. 919.777.0393 f. 919.777.0133 www.valuebuildhomes.com



# THE CHATHAM



## CHATHAM

**HEATED**  
FIRST FLOOR  
TOTAL

1,529 SQ FT  
1,529 SQ FT



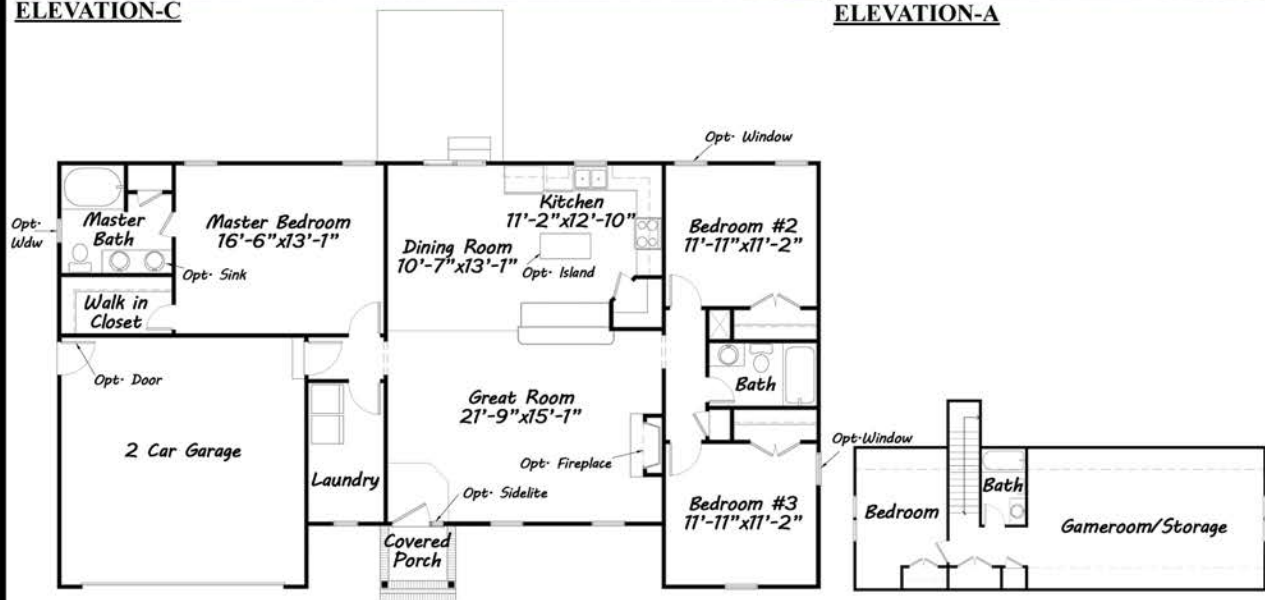
**ELEVATION-C**



**ELEVATION-B**



**ELEVATION-A**



**FIRST FLOOR**

**OPTIONAL SECOND FLOOR**

Value Build Homes 3015 S. Jefferson Davis Highway Sanford, NC 27332  
t. 919.777.0393 f. 919.777.0133 www.valuebuildhomes.com

## Spring Meadows

### CHEROKEE

**HEATED**

FIRST FLOOR	1,185 SQ FT
SECOND FLOOR	1,580 SQ FT
TOTAL	2,765 SQ FT



**ELEVATION-C**

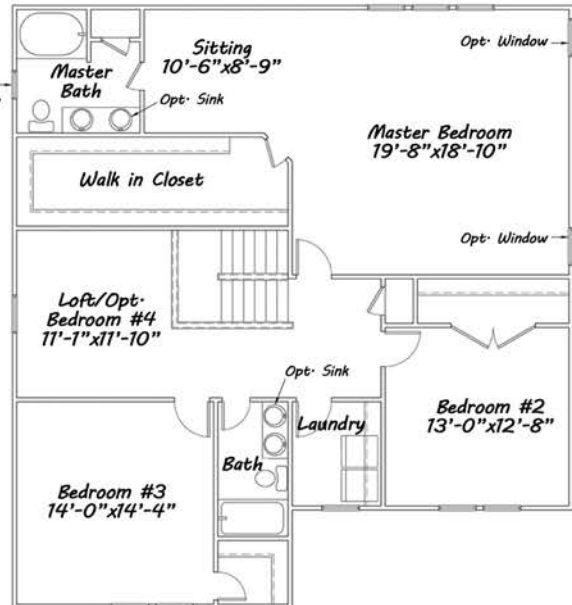
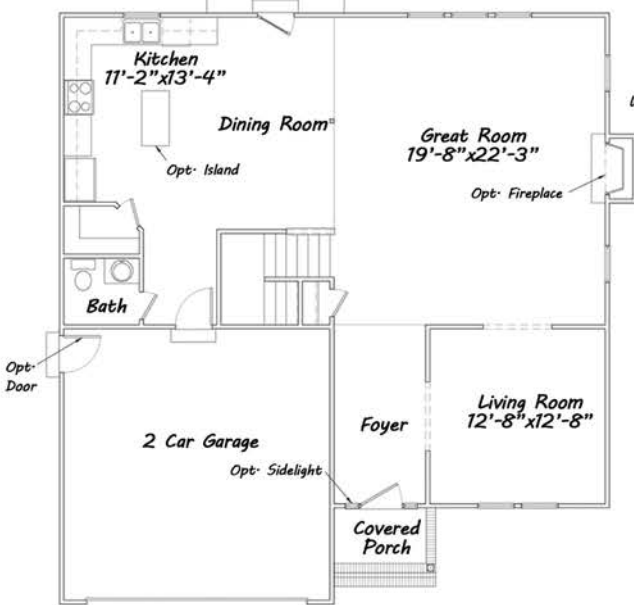
Deck/Porch  
10'-0" x 12'-0"



**ELEVATION-B**



**ELEVATION-A**



Value Build Homes 3015 S. Jefferson Davis Highway Sanford, NC 27332  
t. 919.777.0393 f. 919.777.0133 www.valuebuildhomes.com

# THE CHRISTINE

Sanford / Raleigh / Durham /  
Chapel Hill areas:  
(919) 895-3855

Charlotte / Gastonia / Concord /  
Matthews areas:  
(704) 499-3023



Greensboro / Winston Salem /  
Wilkesboro / Statesville areas:  
(336) 776-3128

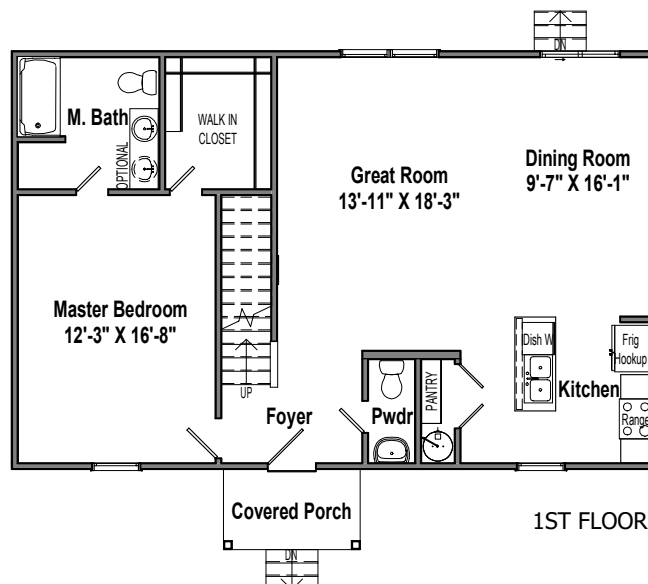
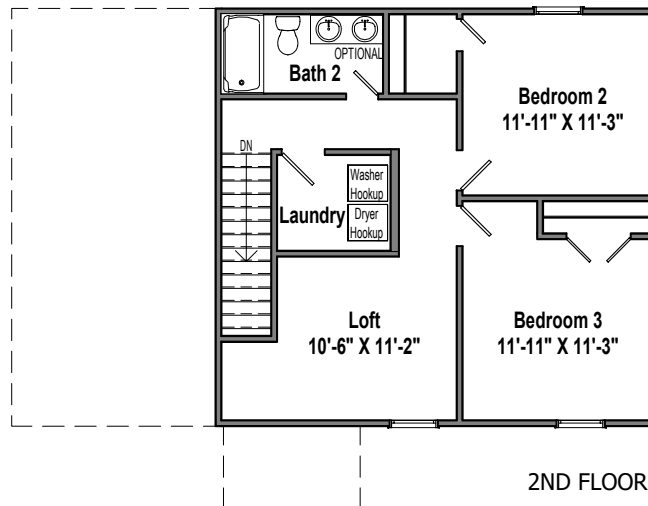
Fayetteville / Elizabethtown /  
Goldsboro areas:  
(910) 887-3314



ELEVATION A



ELEVATION B



The Christine - 1768 sq.ft.

REV. 5-8-20



# THE CREEKMORE

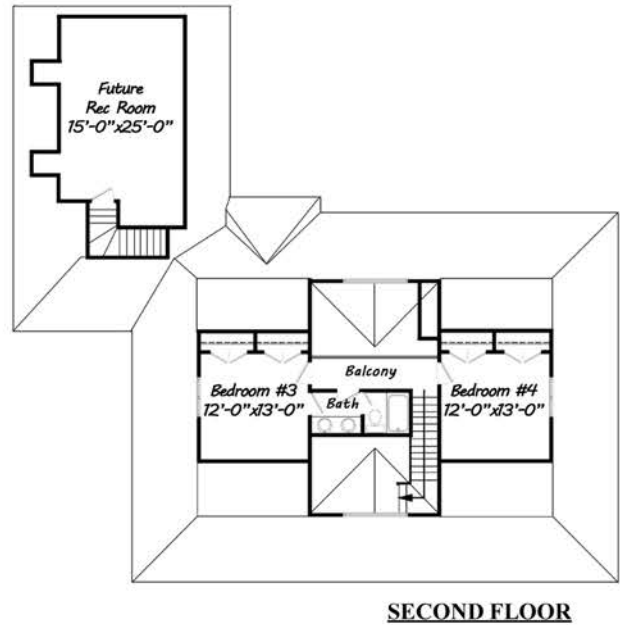
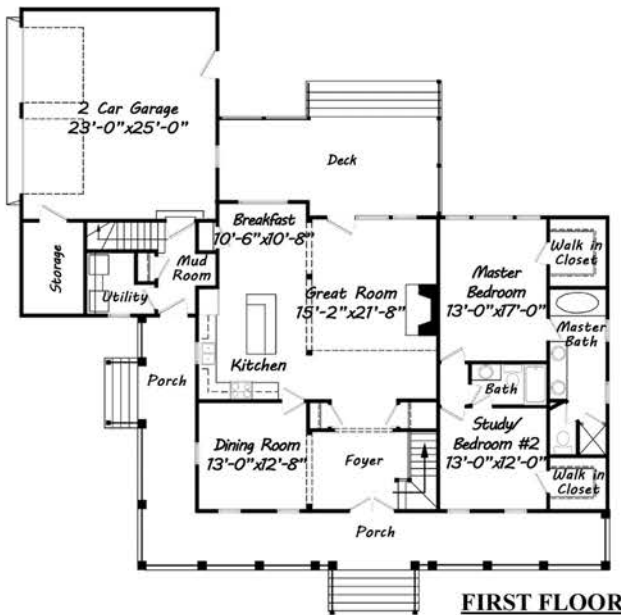


## CREEKMORE

**HEATED**  
TOTAL

*Signature Series*

2,553 SQ FT



Value Build Homes 3015 S. Jefferson Davis Highway Sanford, NC 27332  
t. 919.777.0393 f. 919.777.0133 www.valuebuildhomes.com

# THE DONALD

Sanford / Raleigh / Durham /  
Chapel Hill areas:  
(919) 895-3855

Charlotte / Gastonia / Concord /  
Matthews areas:  
(704) 499-3023



Greensboro / Winston Salem /  
Wilkesboro / Statesville areas:  
(336) 776-3128

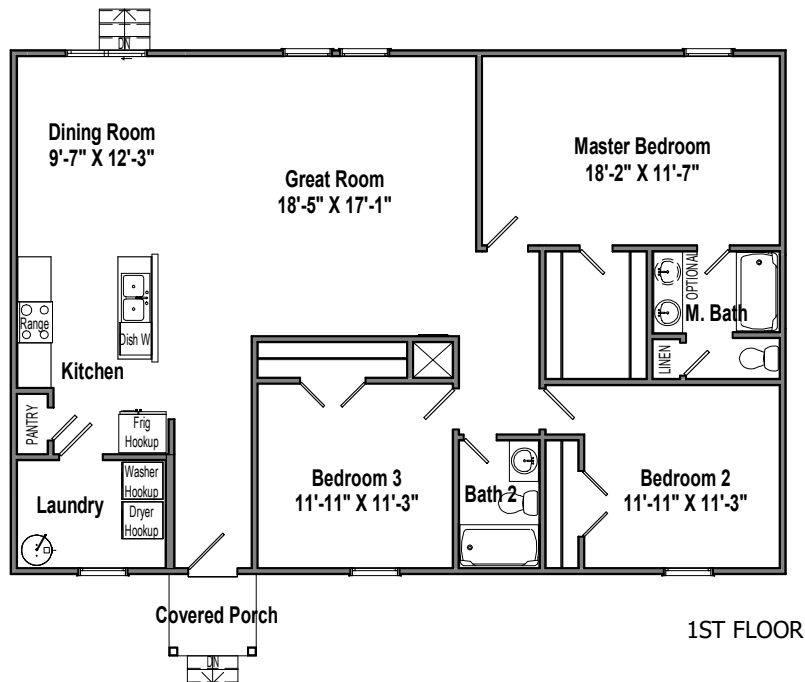
Fayetteville / Elizabethtown /  
Goldboro areas:  
(910) 887-3314



ELEVATION A



ELEVATION B



1ST FLOOR

The Donald - 1515 sq.ft.

# THE DUPLIN



## DUPLIN

### HEATED

FIRST FLOOR	656 SQ FT
SECOND FLOOR	889 SQ FT
TOTAL	1,545 SQ FT



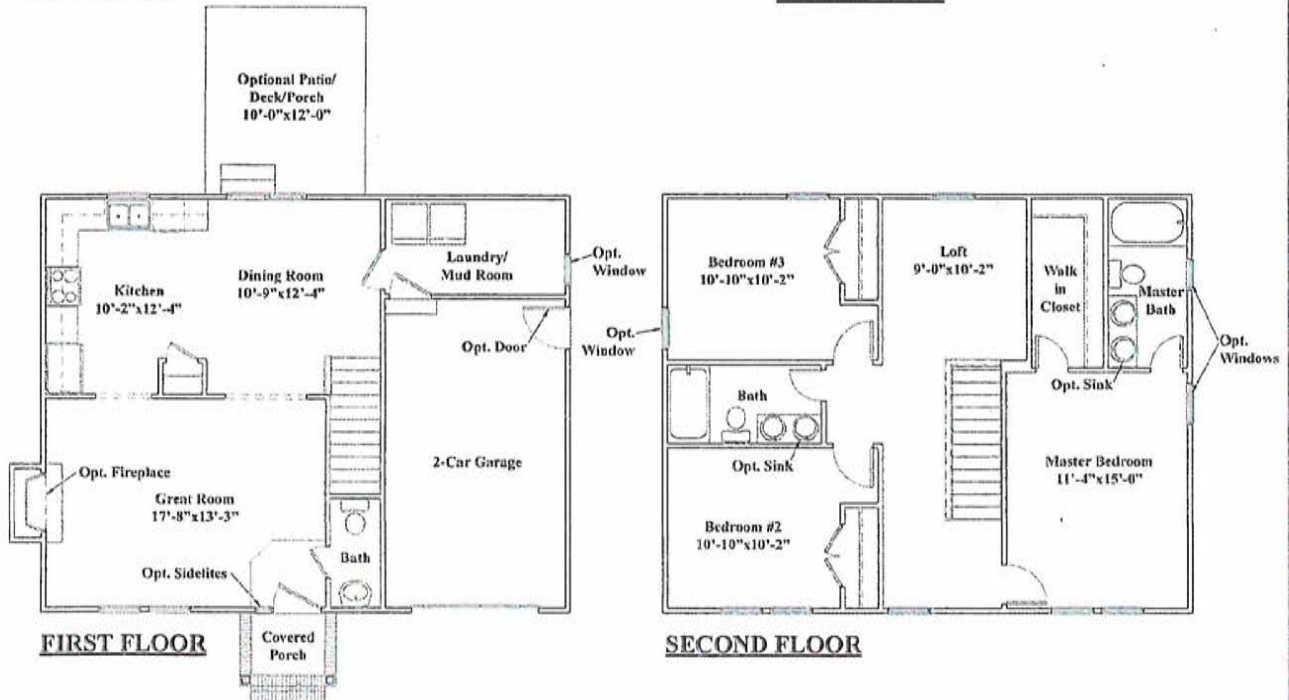
ELEVATION-C



ELEVATION-B



ELEVATION-A



Value Build Homes 3015 S. Jefferson Davis Highway Sanford, NC 27332  
 T. 919.777.0393 F. 919.777.0133 www.valuebuildhomes.com



# THE ERICKSON



## ERICKSON

### HEATED

FIRST FLOOR	1,039 SQ FT
SECOND FLOOR	1,039 SQ FT
TOTAL	2,078 SQ FT



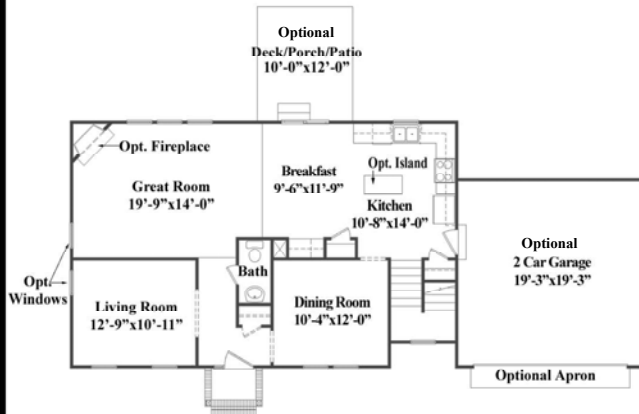
**ELEVATION-C**



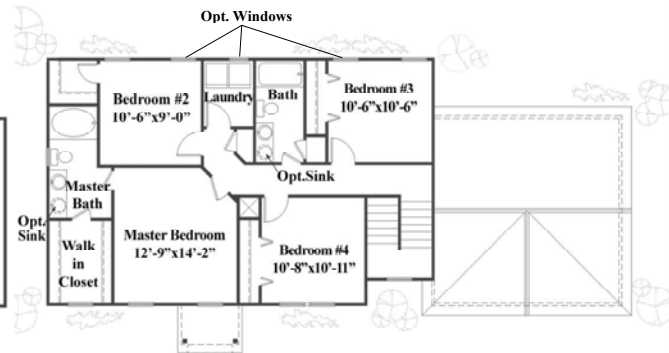
**ELEVATION-B**



**ELEVATION-A**



**FIRST FLOOR**



**SECOND FLOOR**

Value Build Homes 3015 S. Jefferson Davis Highway Sandford, NC 27332  
 t. 919.777.0393 f. 919.777.0133 www.valuebuildhomes.com

# THE GRAHAM



## GRAHAM

**HEATED**  
FIRST FLOOR  
TOTAL

1,254 SQ FT  
1,254 SQ FT



**ELEVATION-C**



**ELEVATION-A**



**ELEVATION-B**



**FIRST FLOOR**

Value Build Homes 3015 S. Jefferson Davis Highway Sanford, NC 27332  
t. 919.777.0393 f. 919.777.0133 www.valuebuildhomes.com





## GREEN

### HEATED

FIRST FLOOR	1,673 SQ FT
SECOND FLOOR	1,973 SQ FT
<b>TOTAL</b>	<b>3,646 SQ FT</b>



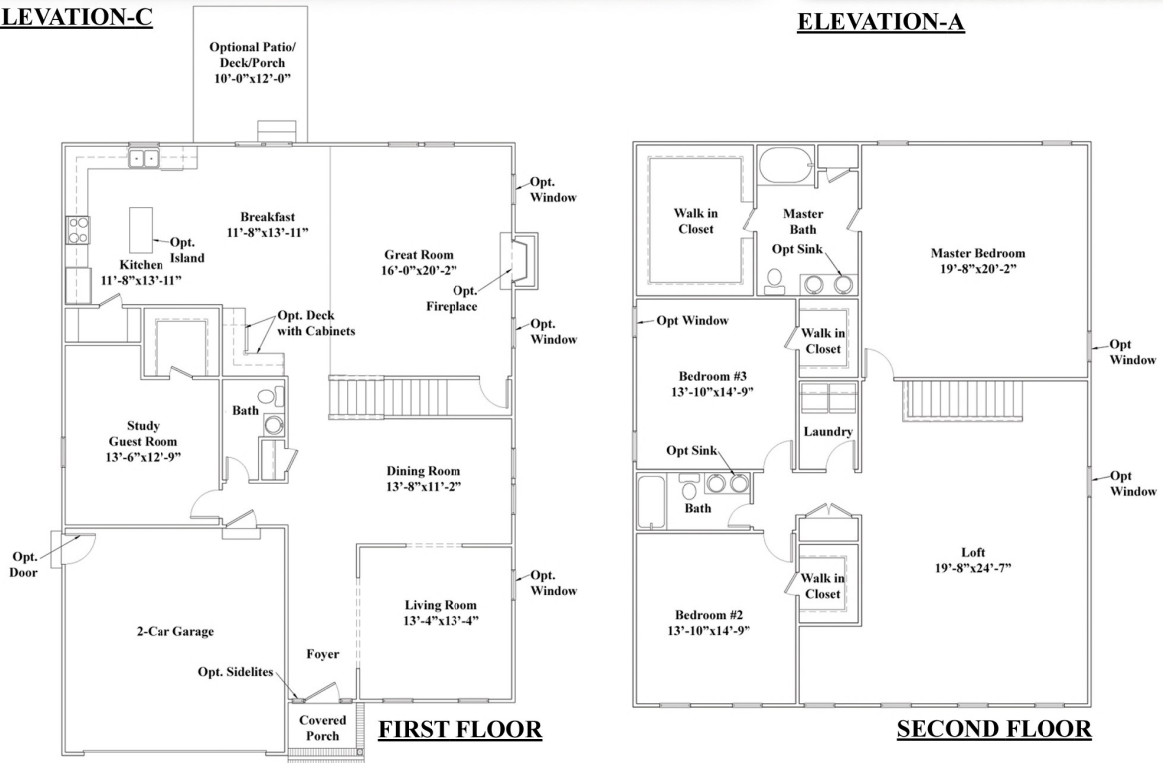
**ELEVATION-C**



**ELEVATION-B**



**ELEVATION-A**



Value Build Homes 3015 S. Jefferson Davis Highway Sanford, NC 27332  
 t. 919.777.0393 f. 919.777.0133 www.valuebuildhomes.com





## HYDE

### HEATED

FIRST FLOOR	1,403 SQ FT
SECOND FLOOR	1,703 SQ FT
TOTAL	3,106 SQ FT



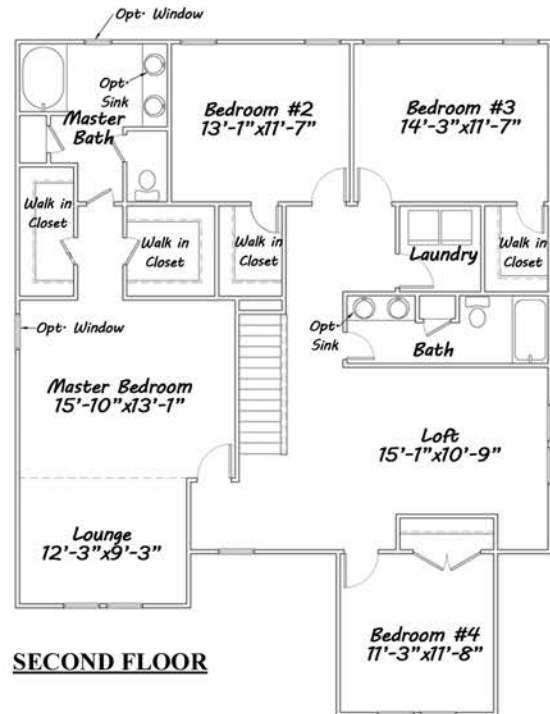
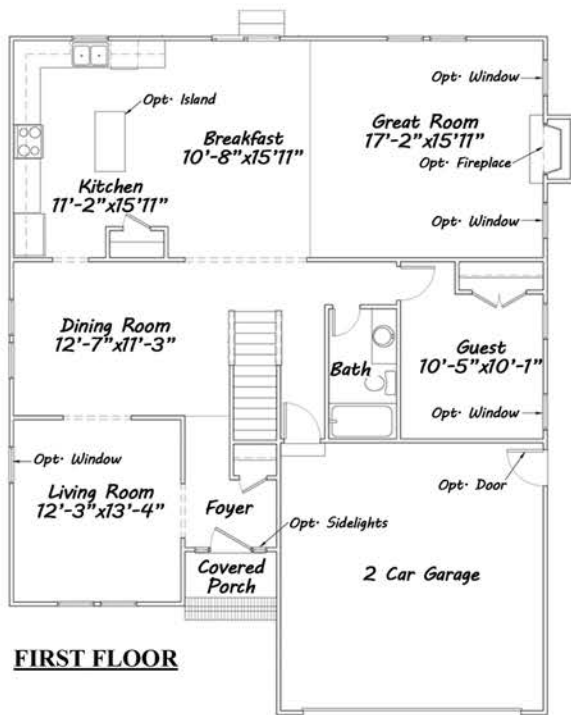
ELEVATION-C



ELEVATION-B



ELEVATION-A



Value Build Homes 3015 S. Jefferson Davis Highway Sanford, NC 27332  
 t. 919.777.0393 f. 919.777.0133 www.valuebuildhomes.com

# THE JUDY

Sanford / Raleigh / Durham /  
Chapel Hill areas:  
(919) 895-3855

Charlotte / Gastonia / Concord /  
Matthews areas:  
(704) 499-3023



Greensboro / Winston Salem /  
Wilkesboro / Statesville areas:  
(336) 776-3128

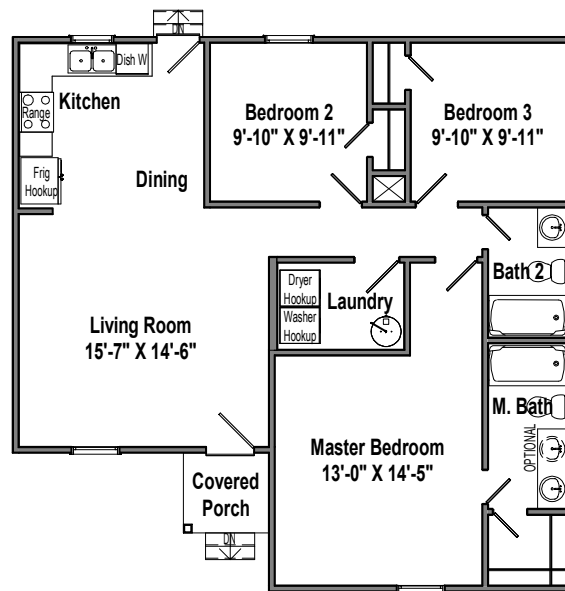
Fayetteville / Elizabethtown /  
Goldboro areas:  
(910) 887-3314



ELEVATION A



ELEVATION B



1ST FLOOR

The Judy - 1075 sq.ft.

REV. 5-8-20

Sanford / Raleigh / Durham /  
Chapel Hill areas:  
(919) 895-3855

Charlotte / Gastonia / Concord /  
Matthews areas:  
(704) 499-3023



Greensboro / Winston Salem /  
Wilkesboro / Statesville areas:  
(336) 776-3128

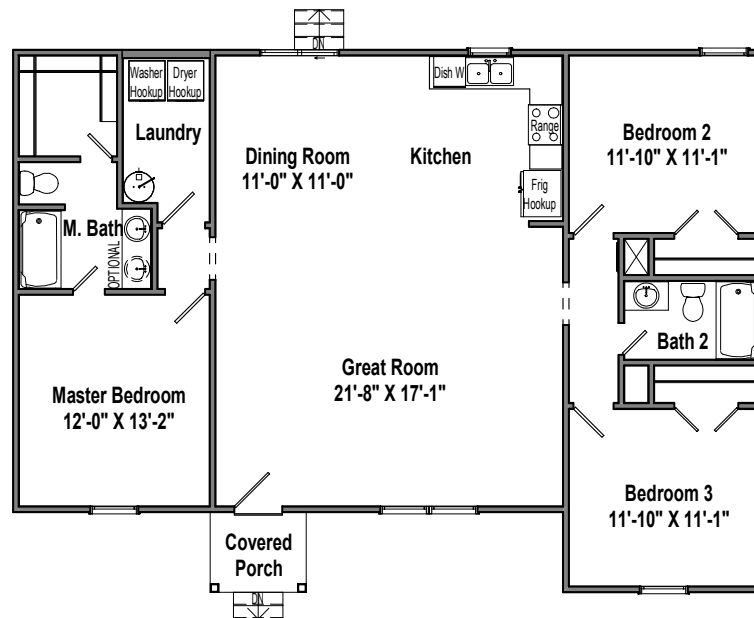
Fayetteville / Elizabethtown /  
Goldsboro areas:  
(910) 887-3314



ELEVATION A



ELEVATION B



1ST FLOOR

The Kelly - 1421 sq.ft.



# THE LINDA

Sanford / Raleigh / Durham /  
Chapel Hill areas:  
(919) 895-3855

Charlotte / Gastonia / Concord /  
Matthews areas:  
(704) 499-3023



Greensboro / Winston Salem /  
Wilkesboro / Statesville areas:  
(336) 776-3128

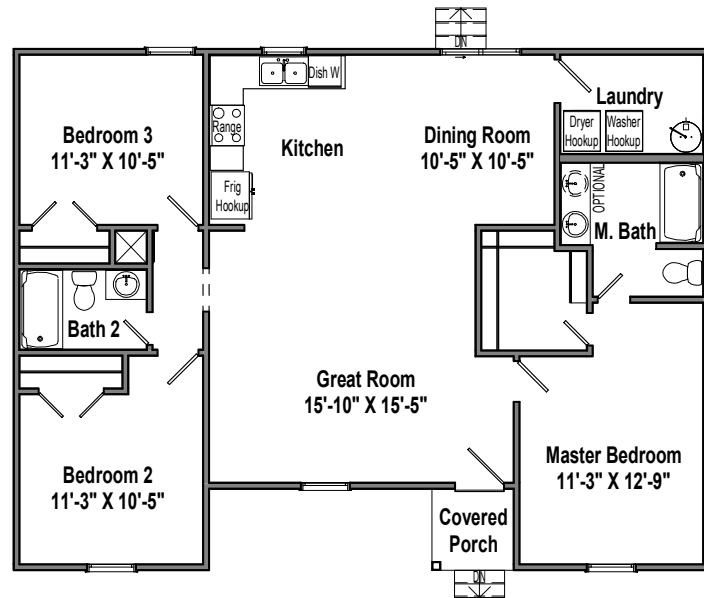
Fayetteville / Elizabethtown /  
Goldsboro areas:  
(910) 887-3314



ELEVATION A



ELEVATION B



1ST FLOOR

The Linda - 1272 sq.ft.

REV. 5-8-20

# THE MATTHEW

Sanford / Raleigh / Durham /  
Chapel Hill areas:  
(919) 895-3855

Charlotte / Gastonia / Concord /  
Matthews areas:  
(704) 499-3023



Greensboro / Winston Salem /  
Wilkesboro / Statesville areas:  
(336) 776-3128

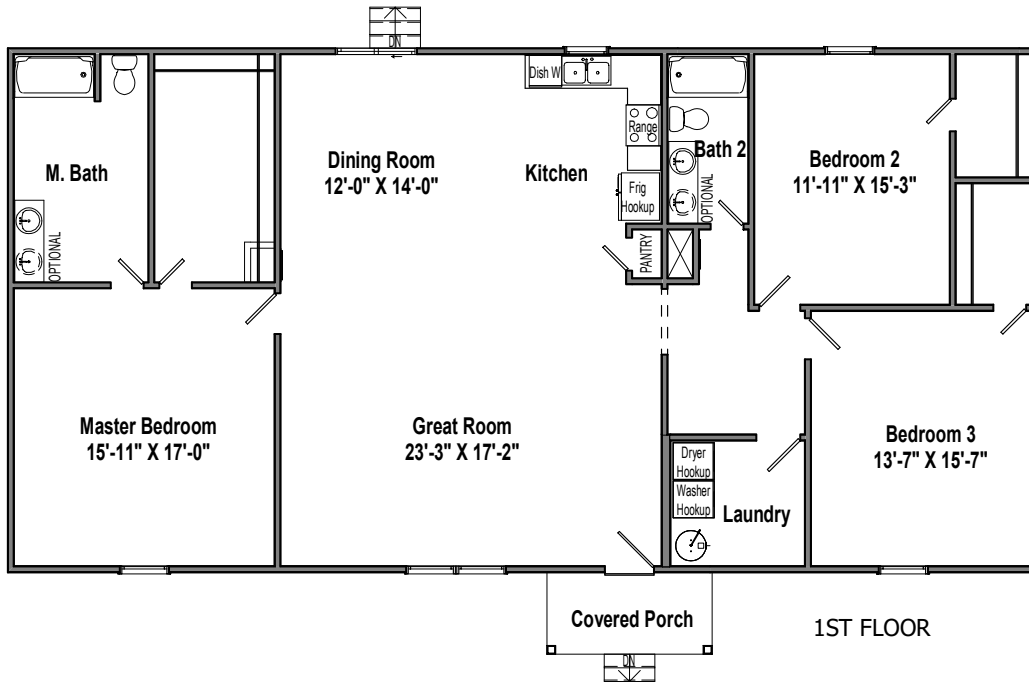
Fayetteville / Elizabethtown /  
Goldsboro areas:  
(910) 887-3314



ELEVATION A



ELEVATION B



The Matthew - 2016 sq.ft.

REV. 5-8-20



## MOORE

### HEATED

FIRST FLOOR	962 SQ FT
SECOND FLOOR	1,263SQ FT
TOTAL	2,225 SQ FT



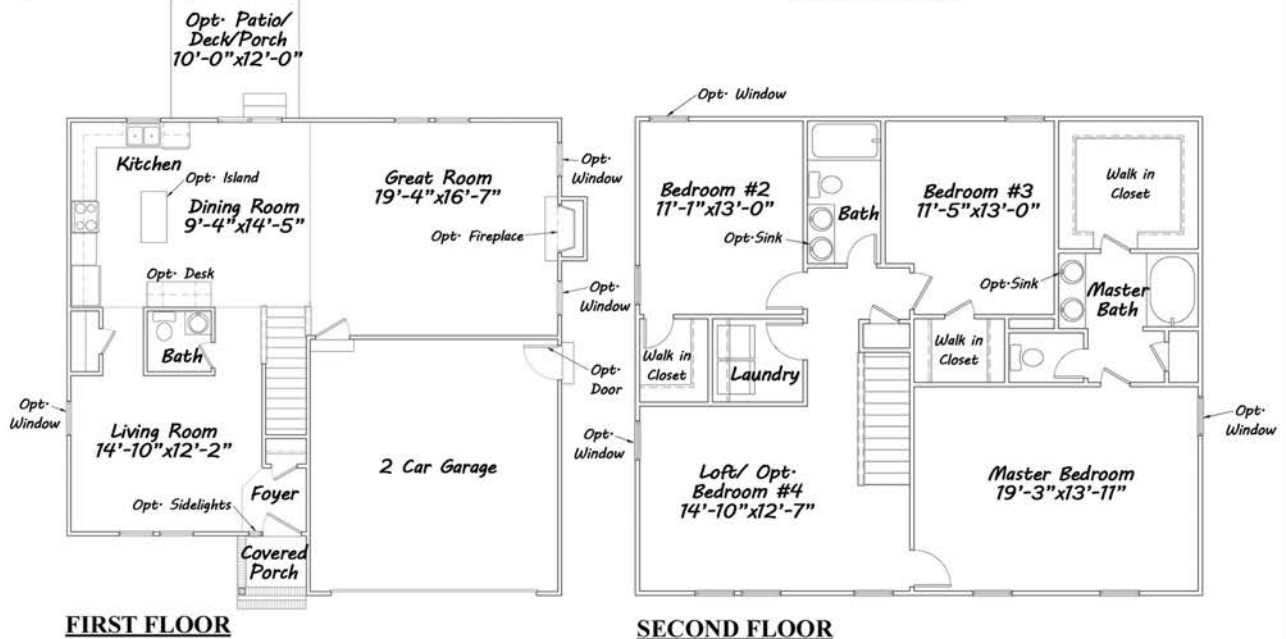
**ELEVATION-C**



**ELEVATION-B**



**ELEVATION-A**







## NASH

**HEATED**

FIRST FLOOR

1,657 SQ FT

TOTAL

1,657 SQ FT



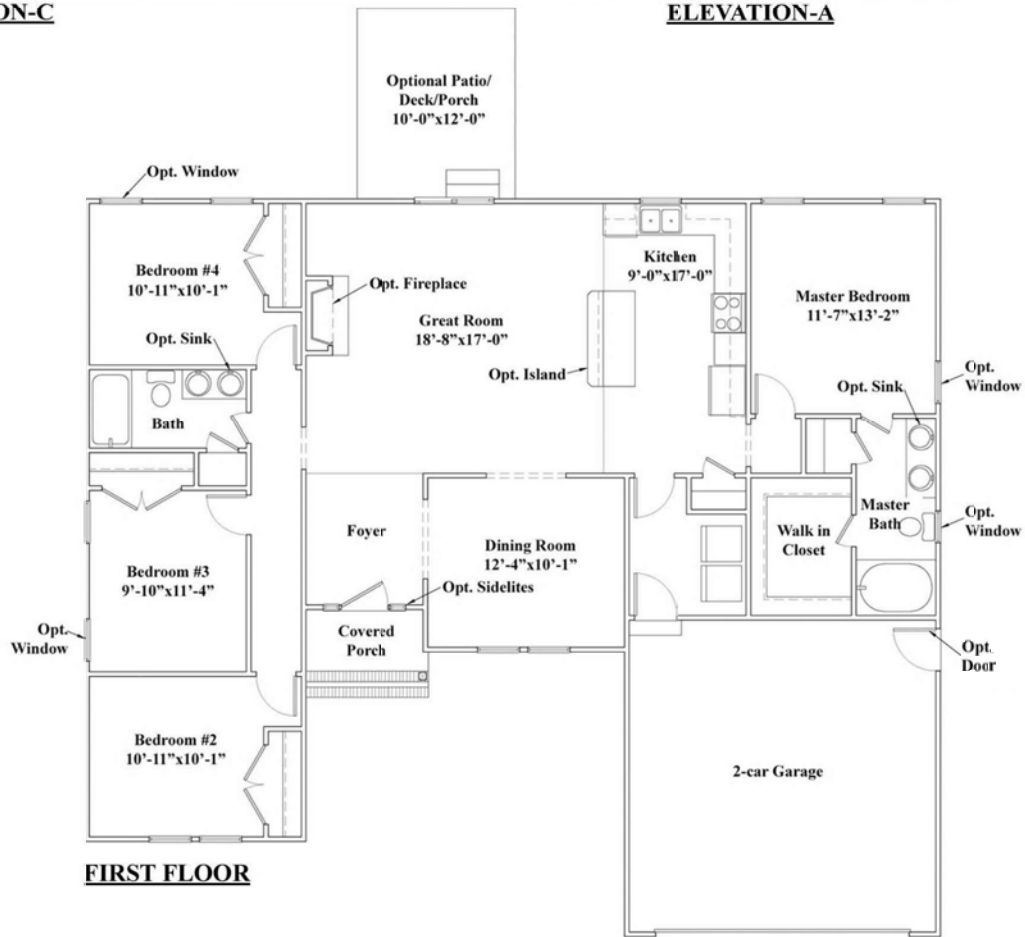
**ELEVATION-C**



**ELEVATION-B**



**ELEVATION-A**



Value Build Homes 3015 S. Jefferson Davis Highway Sanford, NC 27332  
t. 919.777.0393 f. 919.777.0133 www.valuebuildhomes.com

# THE NORMAN

Sanford / Raleigh / Durham /  
Chapel Hill areas:  
(919) 895-3855

Charlotte / Gastonia / Concord /  
Matthews areas:  
(704) 499-3023



www.VALUEBUILDHOMES.com

Greensboro / Winston Salem /  
Wilkesboro / Statesville areas:  
(336) 776-3128

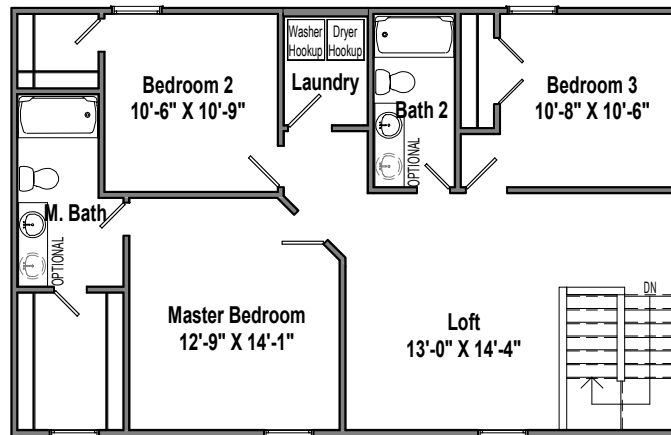
Fayetteville / Elizabethtown /  
Goldsboro areas:  
(910) 887-3314



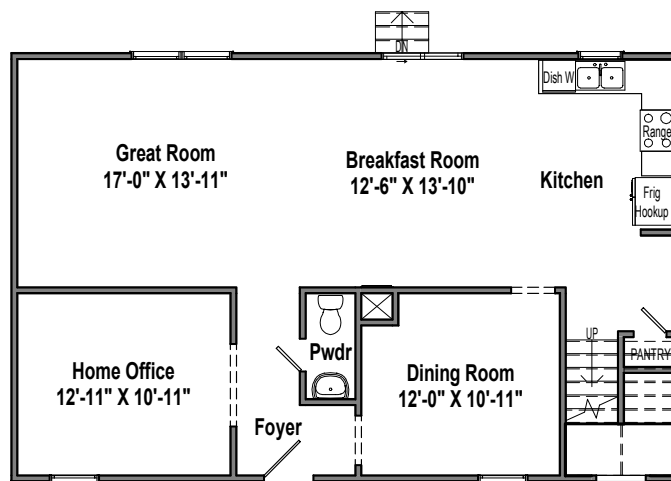
ELEVATION A



ELEVATION B



2ND FLOOR



1ST FLOOR

The Norman - 2117 sq.ft.

REV. 5-8-20



## PAMLICO

**HEATED**

FIRST FLOOR

2,092 SQ FT

TOTAL

2,092 SQ FT



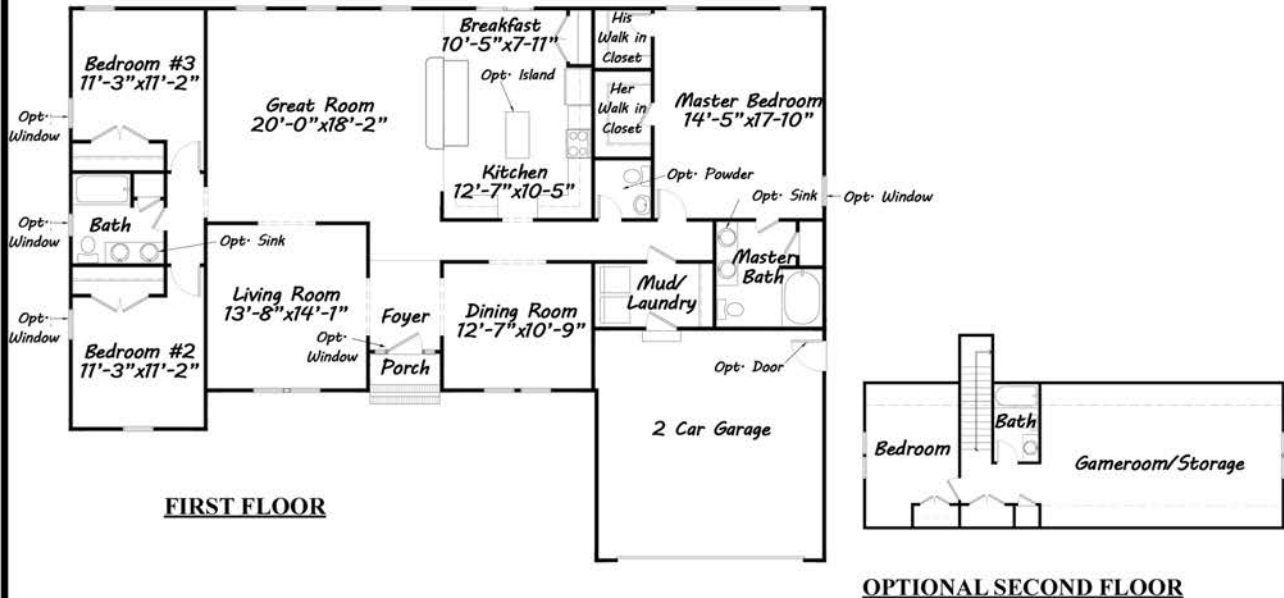
**ELEVATION-C**



**ELEVATION-A**



**ELEVATION-B**



Value Build Homes 3015 S. Jefferson Davis Highway Sanford, NC 27332  
 t. 919.777.0393 f. 919.777.0133 www.valuebuildhomes.com





## PATRIOT

**HEATED**

FIRST FLOOR

1,515 SQ FT

TOTAL

1,515 SQ FT



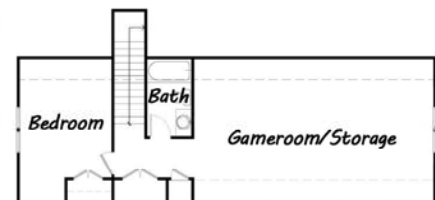
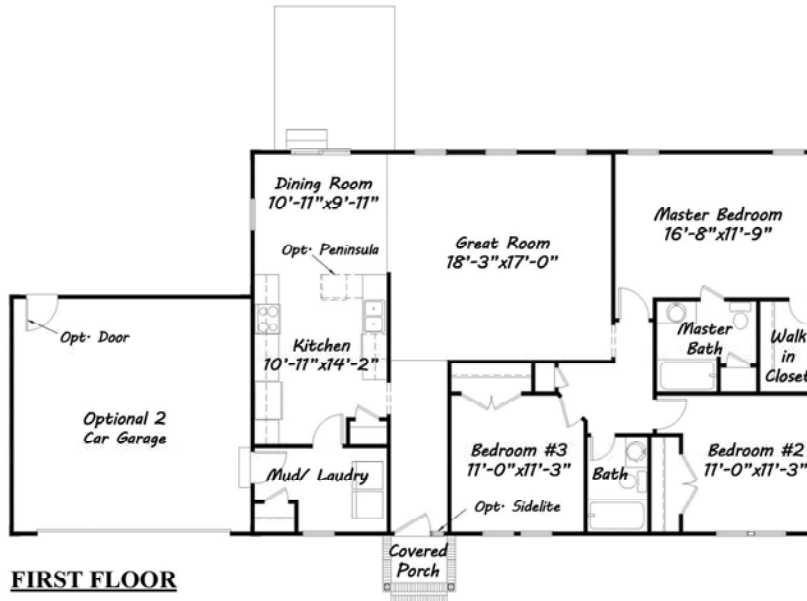
**ELEVATION-C**



**ELEVATION-B**



**ELEVATION-A**



# THE PAULA

Sanford / Raleigh / Durham /  
Chapel Hill areas:  
(919) 895-3855

Charlotte / Gastonia / Concord /  
Matthews areas:  
(704) 499-3023



Greensboro / Winston Salem /  
Wilkesboro / Statesville areas:  
(336) 776-3128

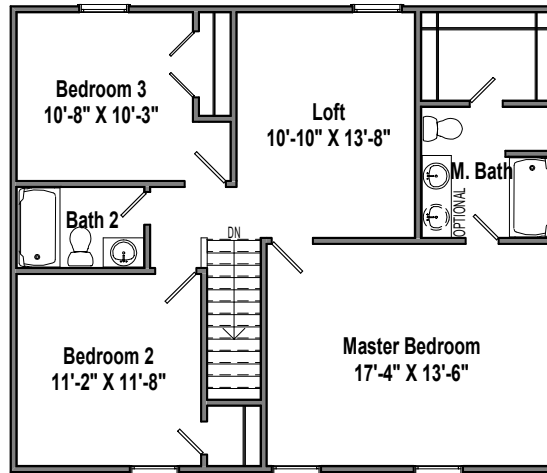
Fayetteville / Elizabethtown /  
Goldsboro areas:  
(910) 887-3314



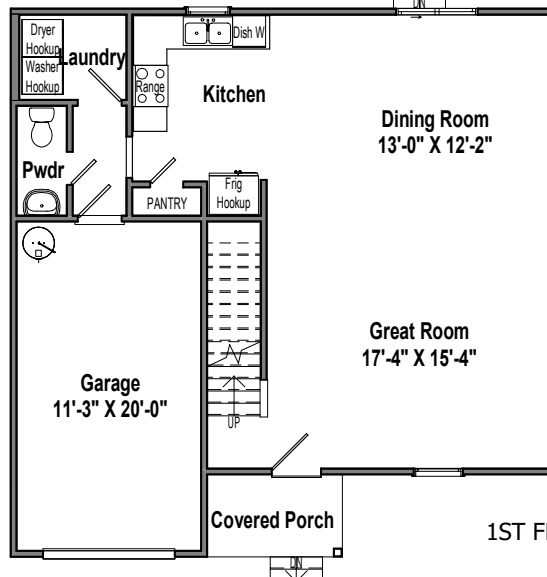
ELEVATION A



ELEVATION B



2ND FLOOR



1ST FLOOR

The Paula - 1711 sq.ft.



## PITT

### HEATED

FIRST FLOOR	766 SQ FT
SECOND FLOOR	945 SQ FT
TOTAL	1,711 SQ FT



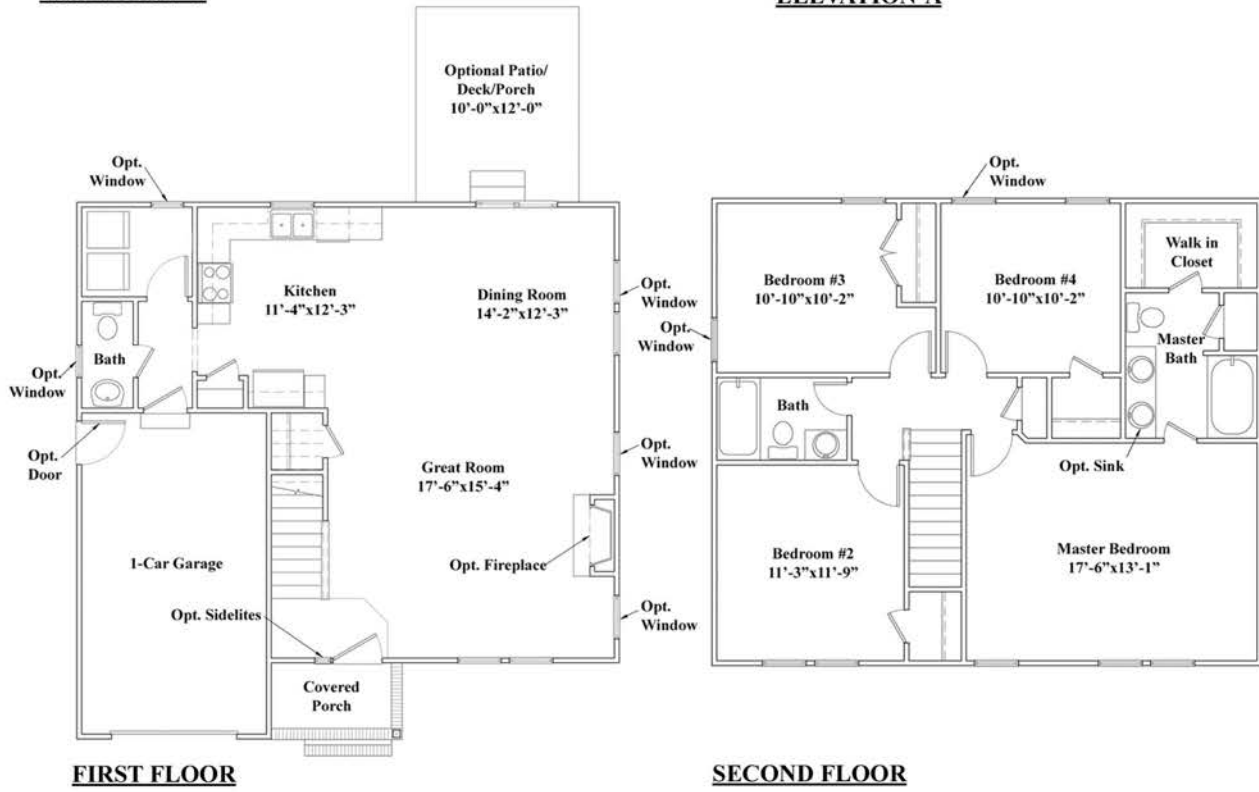
**ELEVATION-C**



**ELEVATION-B**



**ELEVATION-A**





# THE ROBIN

Sanford / Raleigh / Durham /  
Chapel Hill areas:  
(919) 895-3855

Charlotte / Gastonia / Concord /  
Matthews areas:  
(704) 499-3023



Greensboro / Winston Salem /  
Wilkesboro / Statesville areas:  
(336) 776-3128

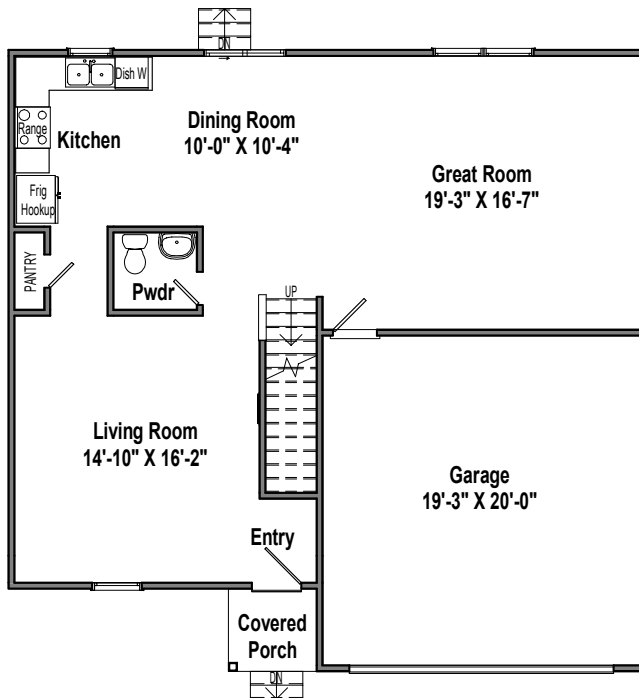
Fayetteville / Elizabethtown /  
Goldsboro areas:  
(910) 887-3314



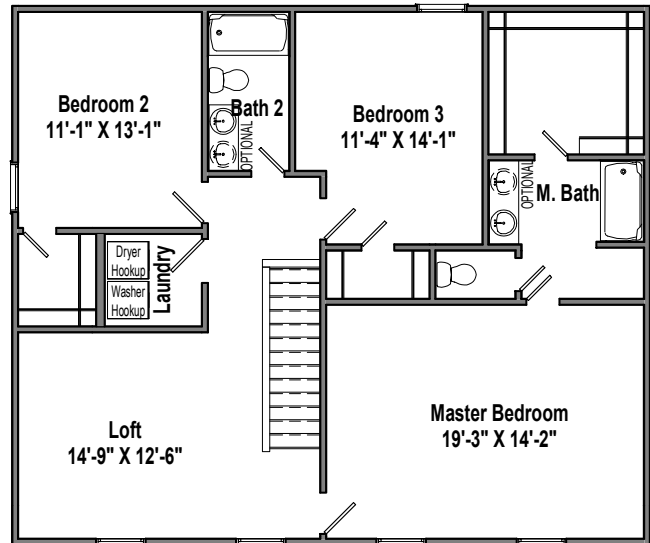
ELEVATION A



ELEVATION B



1ST FLOOR



2ND FLOOR

The Robin - 1768 sq.ft.

# THE SCOTLAND



## SCOTLAND

### HEATED

FIRST FLOOR	1,306 SQ FT
SECOND FLOOR	1,258 SQ FT
TOTAL	2,564 SQ FT



**ELEVATION-C**



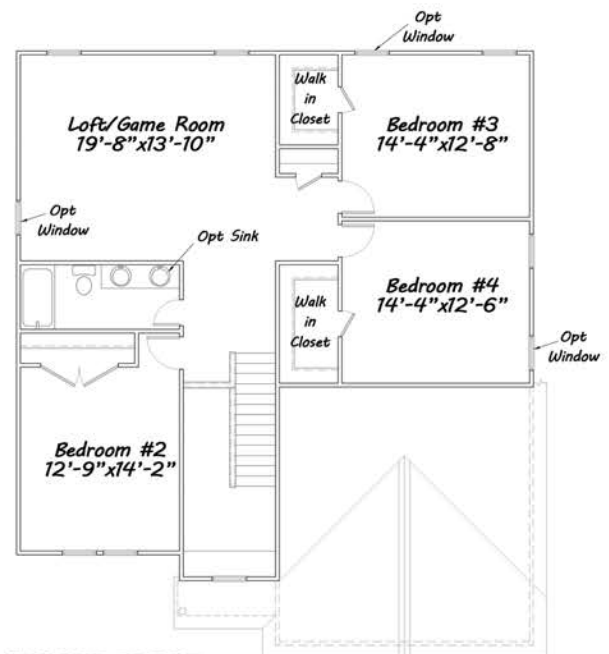
**ELEVATION-B**



**ELEVATION-A**



**FIRST FLOOR**



**SECOND FLOOR**

Value Build Homes 3015 S. Jefferson Davis Highway Sanford, NC 27332  
 t. 919.777.0393 f. 919.777.0133 www.valuebuildhomes.com

# THE STANLEY



## STANLEY

### HEATED

FIRST FLOOR	782 SQ FT
SECOND FLOOR	1,160 SQ FT
TOTAL	1,943 SQ FT



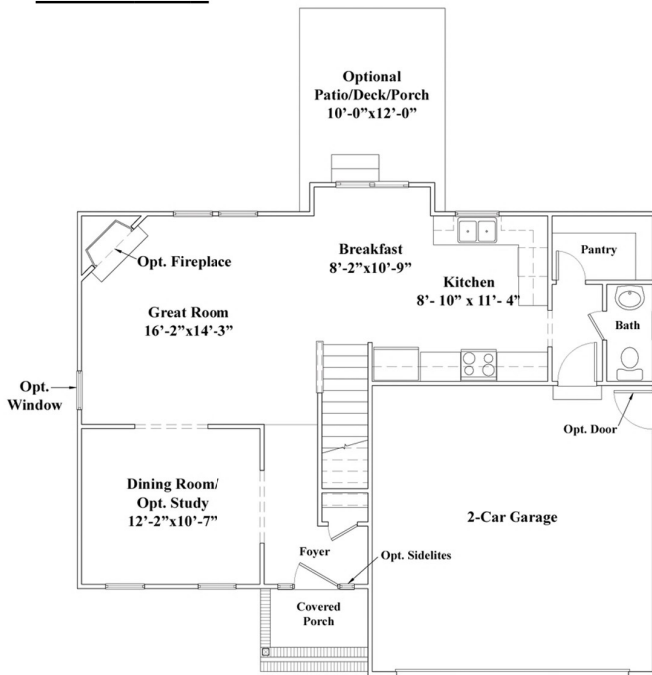
**ELEVATION-C**



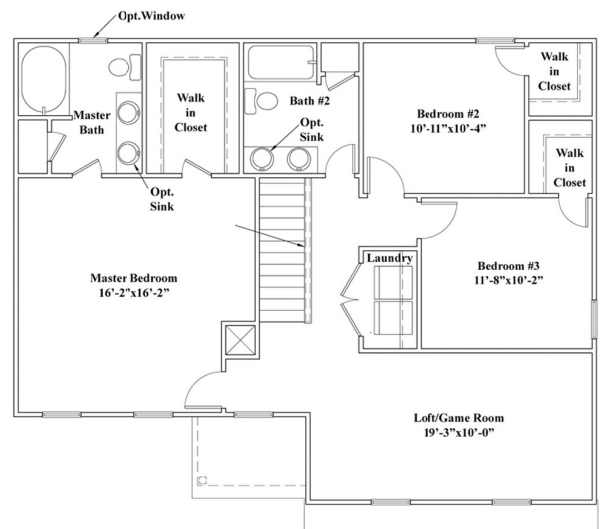
**ELEVATION-B**



**ELEVATION-A**



**FIRST FLOOR**



**SECOND FLOOR**

Value Build Homes 3015 S. Jefferson Davis Highway Sanford, NC 27332  
 t. 919.777.0393 f. 919.777.0133 www.valuebuildhomes.com



# THE VANCE



## VANCE

### HEATED

FIRST FLOOR

2,048 SQ FT

TOTAL

2,048 SQ FT



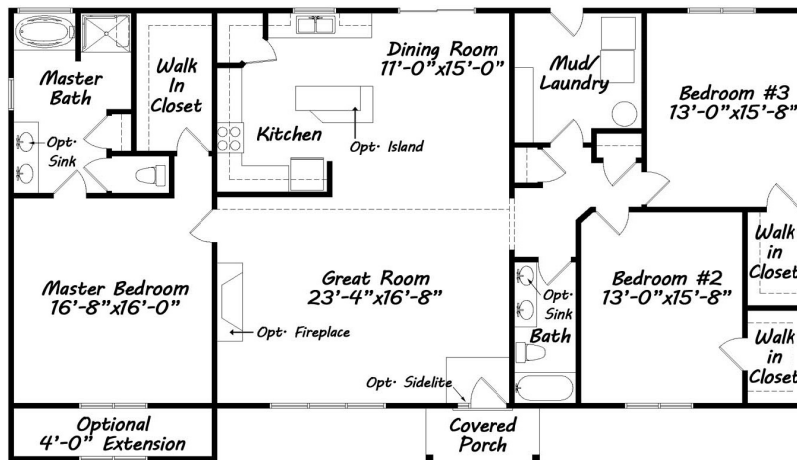
**ELEVATION-C**



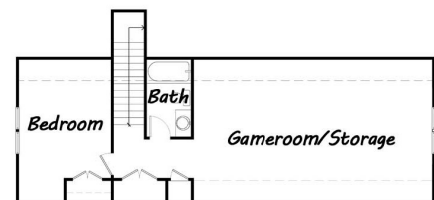
**ELEVATION-A**



**ELEVATION-B**



**FIRST FLOOR**



**OPTIONAL SECOND FLOOR**

Value Build Homes 3015 S. Jefferson Davis Highway Sanford, NC 27332  
 t. 919.777.0393 f. 919.777.0133 www.valuebuildhomes.com

# THE WASHINGTON



## WASHINGTON

### HEATED

FIRST FLOOR

1,887 SQ FT

TOTAL

1,887 SQ FT



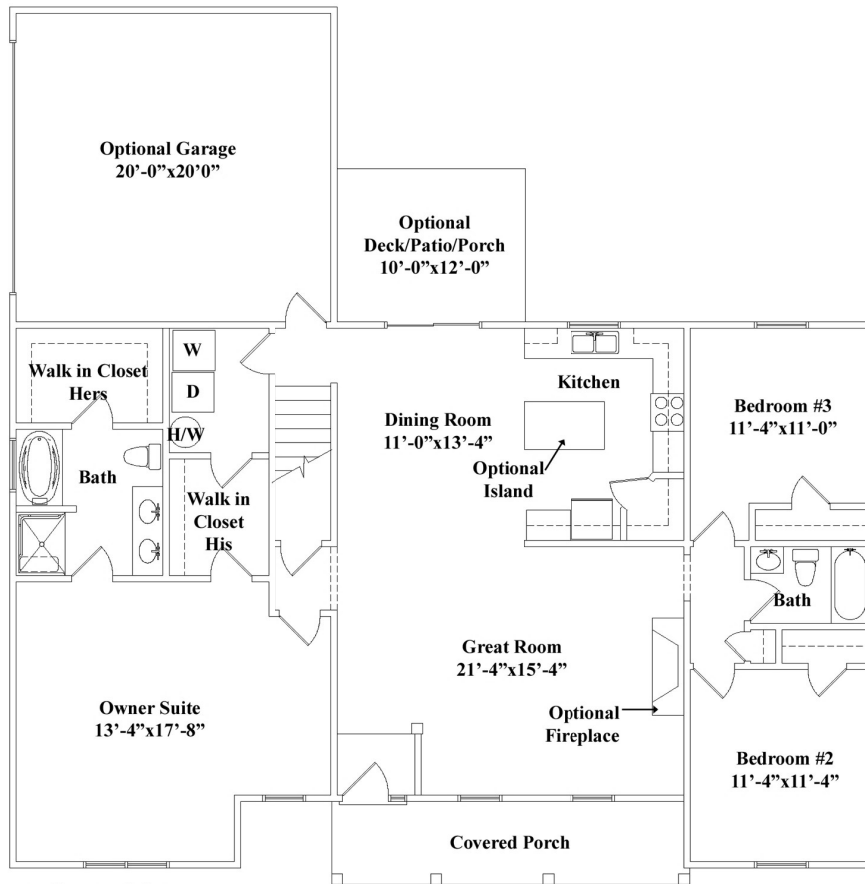
**ELEVATION-C**



**ELEVATION-B**



**ELEVATION-A**



**FIRST FLOOR**

Value Build Homes 3015 S. Jefferson Davis Highway Sanford, NC 27332  
 t. 919.777.0393 f. 919.777.0133 www.valuebuildhomes.com





## WAYNE

### HEATED

FIRST FLOOR	1,370 SQ FT
SECOND FLOOR	1,637 SQ FT
TOTAL	3,007 SQ FT



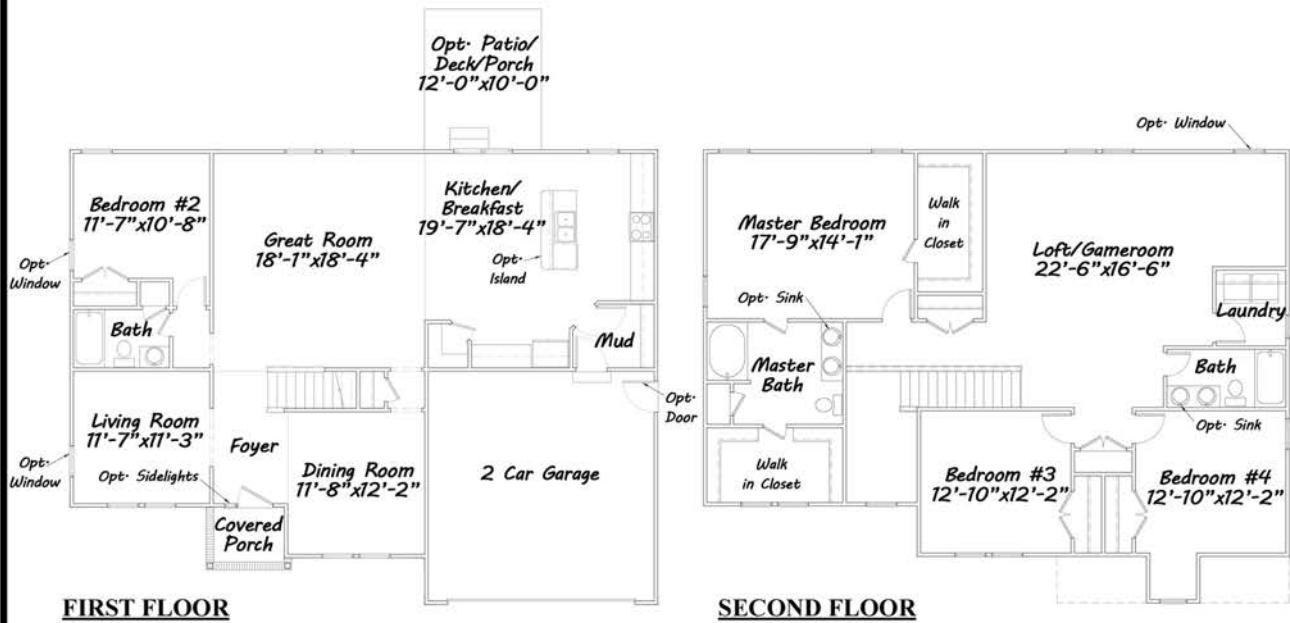
**ELEVATION-C**



**ELEVATION-B**



**ELEVATION-A**





# THE YADKIN



## YADKIN

### HEATED

FIRST FLOOR	1,043 SQ FT
SECOND FLOOR	723 SQ FT
TOTAL	1,766 SQ FT



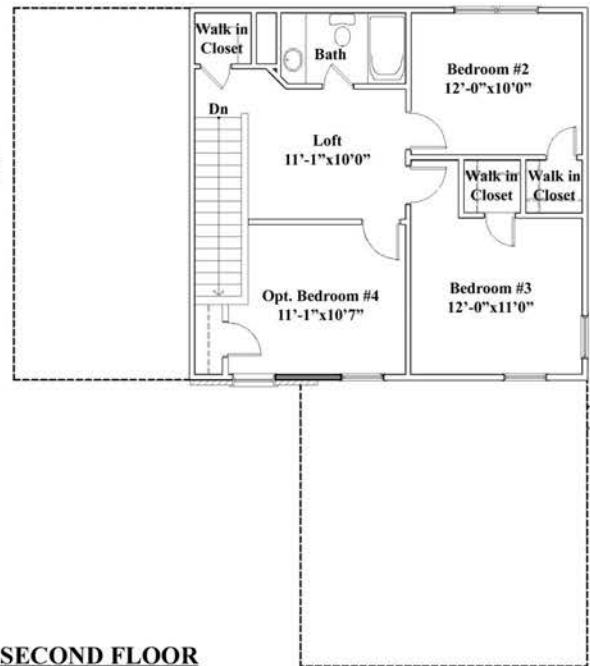
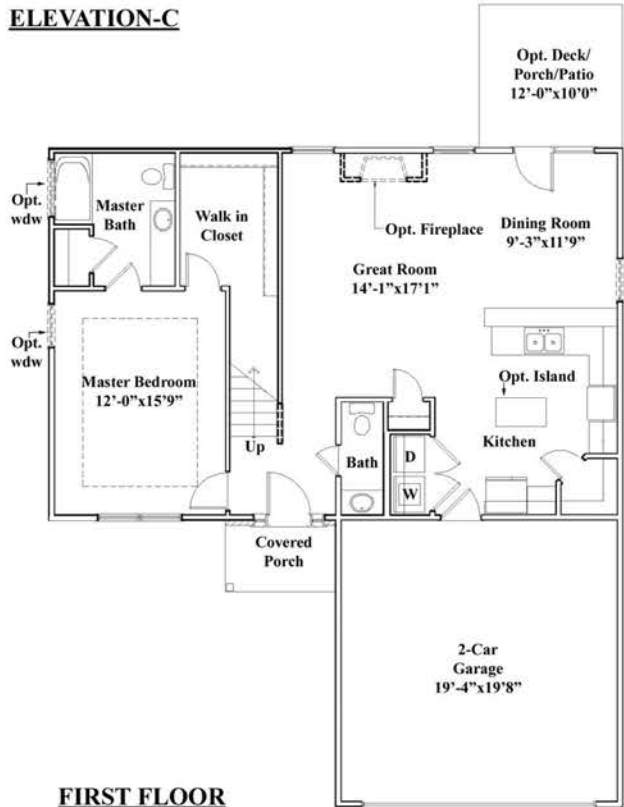
**ELEVATION-C**



**ELEVATION-B**



**ELEVATION-A**



Value Build Homes 3015 S. Jefferson Davis Highway Sanford, NC 27332  
 t. 919.777.0393 f. 919.777.0133 www.valuebuildhomes.com



## Value Build Homes really is different.

Our goal, from the very beginning, was to provide the residents of the Sanford-Pinehurst, NC area with affordable, high-quality, new construction homes. Many aspiring homeowners believed that the only way to get into a new home was to limit themselves to predesigned floor plans and prefabricated components. Now with offices across North Carolina and South Carolina, we have continued with that goal and the belief of never sacrificing quality for one of the most important financial investments in our homeowner's life.

[www.valuebuildhomes.com](http://www.valuebuildhomes.com)

Office: (919) 893-0530

Fax: (919) 777-0133

3015 Jefferson Davis Highway (US1)  
Sanford, NC 27332

[www.valuebuildhomes.com](http://www.valuebuildhomes.com)